

RHYTHM METHOD

ARRANGED BY TOM KUBIS

FAST SWING
INTRO

A

mf

B

(8) (16)

C

(8) (16)

D

(8)

(8)

#

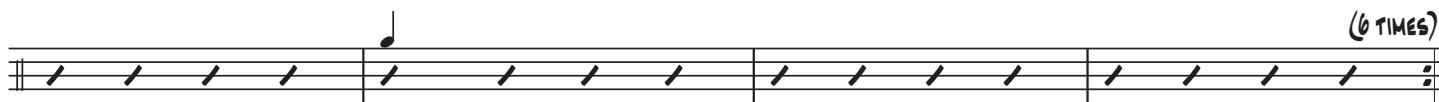
SOLOS (8G 6TH TIME)

(8)

#

(8)

6TH TIME



(6 TIMES)



(8)

ME



(8)



(8)

H (8)

I

J

FILL

K

FILL

Musical staff with notes and a 'FILL' section indicated by a dashed line.

ff

Musical staff with notes and a 'FILL' section.

Musical staff with notes and rests.

Musical staff with notes and a 'FILL' section.

ff

Musical staff with notes and rests.

Musical staff with a 'DRUM SOLO' section and a circled '8'.

f

Musical staff with rests and a circled '8'.

mf

Musical staff with 'FILL', 'TRPT.', '3', and 'FILL' markings.

ff